



Don't miss out! Register today for InTech's Summer PL! [Click for All Summer Courses](#) - [Click for SMART/Win10 Courses](#)

## Windows 10 and SMART Learning Suite

Enhance productivity & student engagement with Win10/SMART. InTech is here to help you get started! Use the **Win10 Reimage Checklist** to quickly back up your computer before reimaging. View our Win10/SMART resources below. [Learn more...](#)

For additional Windows 10 resources click here.

For additional SMART resources click here.

## OneNote Class Notebook Enhancements

**Class Notebook** just got even better! You can add a Teacher Only section, assign students to specific groups in the collaboration space, and create view-only links for parents and guardians. [Learn More...](#)

## Engage Students with Gaming

**SMART Learning Suite** holds all the easy to create and customize gaming templates/themes for your classroom gaming experience. SMART's collaboration and assessment tools are student favorites, too! [Learn More...](#)

## Microsoft Forms + OneNote

Did you know that you can now **embed Microsoft Forms** into **OneNote Online**? Students can complete a quiz or form within their notebook without having to use a different application or a browser. [Learn more...](#)

## Good Digital Citizens Cite their Sources

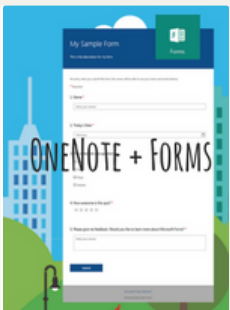
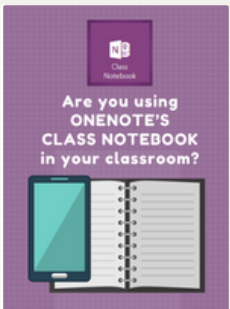
**Cobb Digital Library** contains many useful databases for research. Many of them have easy citation generators for their articles. When teaching research skills, it is critical to teach students how to cite sources. [Learn more...](#)

## Spotlight: Share, Collect & Review Resources

**Edmodo Spotlight** is a stockpile of teacher-created resources that can be filtered by all Grades/Subjects and more than 15 Languages! [Learn more...](#)

## CTLs Assess Data Wrap-Up

**CTLs Student Progress Monitoring** has been compiling data all year. Now is a great time to filter data by standards and review all tests given this year or previous years. Learn how to easily access end of year data. [Learn More...](#)

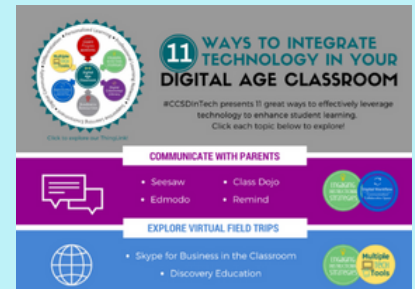


### Microsoft Innovative Educator



**Claudia Daniels**  
MIE with over 22 Badges!  
Uses Microsoft Educators Online Community for PL.  
[Learn more...](#)

How do you Integrate Technology in a Digital Age Classroom? [Click below...](#)



## What is Schoology?

**Schoology** provides teachers with a method of managing lessons, engaging students, sharing content, and connecting with other educators. [Learn more...](#)



- Shortcuts for Windows 10
- Open Search: **Windows Key + S**
  - Display or hide the desktop: **Windows Key + D**

