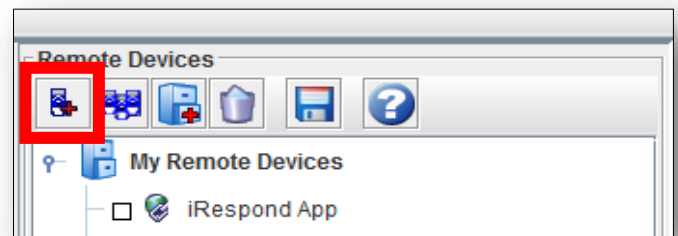


iRespond Remote Collection – Syncing Remotes

This procedure syncs the iRespond remotes with the iRespond software. Any remote not collected during this process will not become active in a session and cannot be used until it is synced/collected.

1. In the upper right corner of the iRespond dashboard, **click the New Remote List button** on the Remote Devices toolbar.



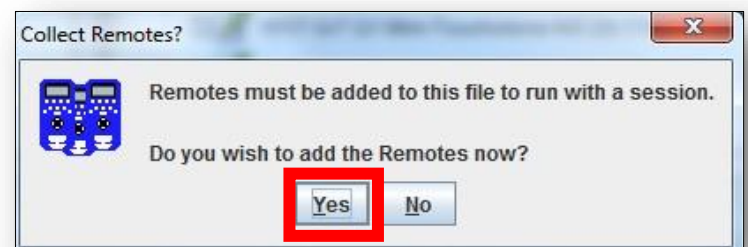
2. In the New Remote Device dialog box, enter a **Device Name**.

Note: It is recommended to use the channel associated with the kit as part of the device name. The channel number is often shown on the front of the iRespond bag. This will help identify which kit has already been collected with your computer.

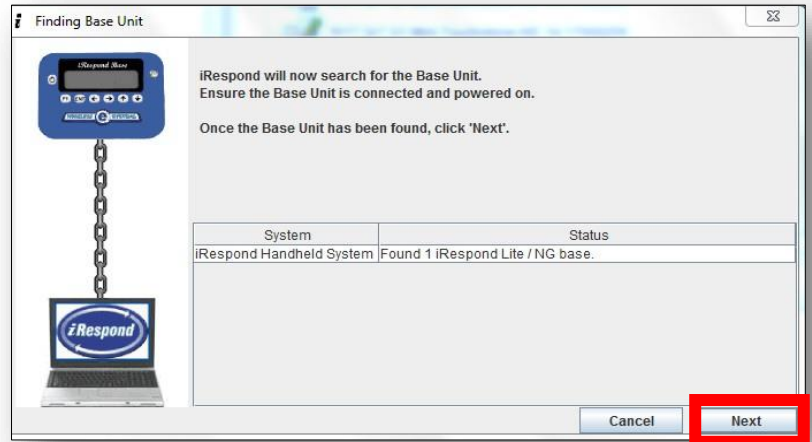


3. Choose the remote **device type** Lite/NG.
4. Click the **Accept** button.

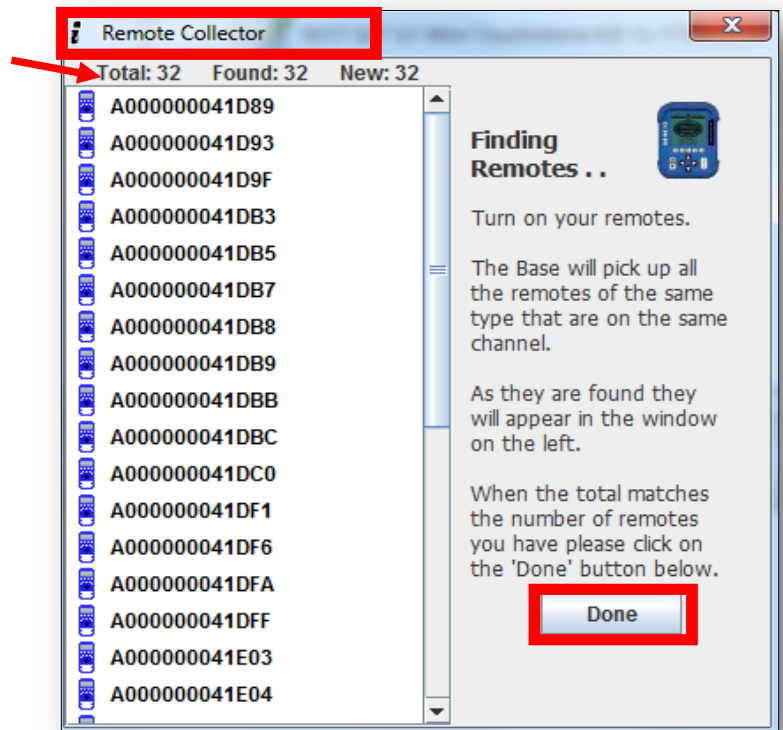
5. In the Collect Remotes dialog box, click the **Yes** button.



6. **Connect the base unit** to your computer with the **USB cable** and **turn on** the base unit.
7. Once the base unit has been found,
Click Next.



8. **Turn 5 remotes on at a time**, and the Remote Collector will gather them into a list. Once you see those 5 collected, turn on 5 more. Continue until all of your remotes have been collected. *Note: The total number of remotes found is displayed at the top of the dialog box.*
9. **Click Done** once all remotes have been collected. The Remote Collector will shut down and turn off the base unit and all remotes.



10. The newly created device list will now appear in the My Remote Devices list and is ready to use.

Note: This process only needs to be completed once for each kit. Additional kits can be collected by repeating the process.

