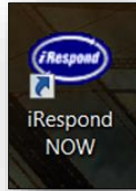


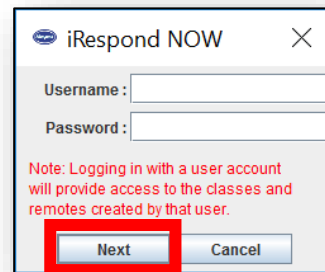
How to Give a Poll in iRespond NOW

iRespond NOW allows teachers to formatively assess students in variety of formats. Use this document to learn how to give a poll in iRespond NOW.

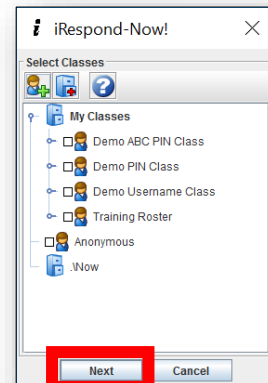
1. Click on the **iRespondNOW** icon.



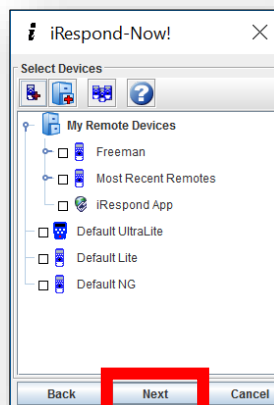
2. Enter your **login information** and click **Next**.
Note: Username is Badge ID and password is teacher.



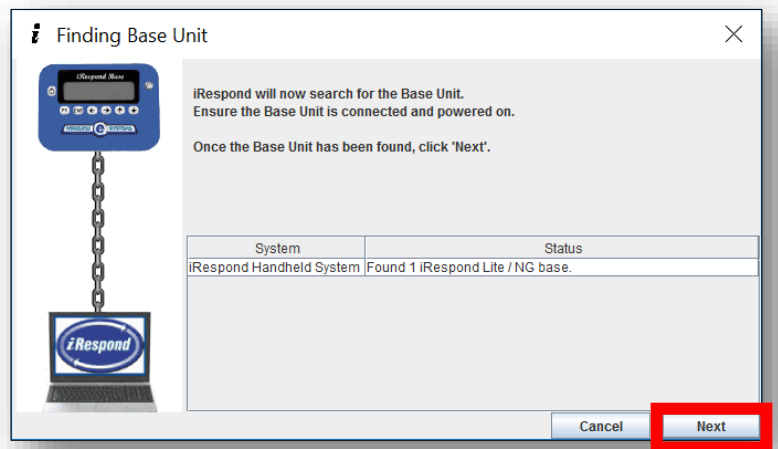
3. Select **your class** and click **Next**. To select multiple rosters, click and hold the Ctrl key and then select the other rosters.



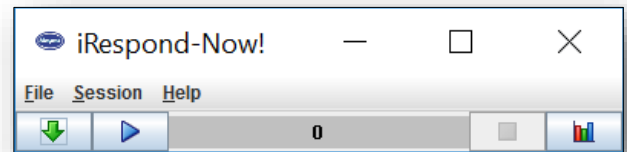
4. Select **your remotes** and click **Next**.



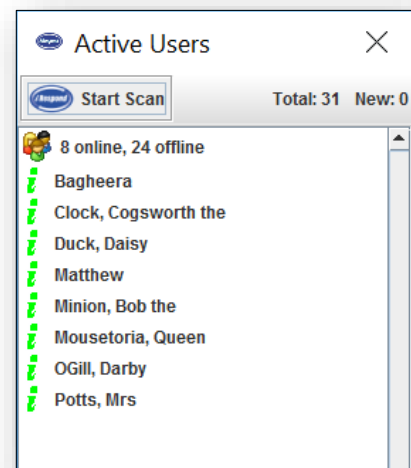
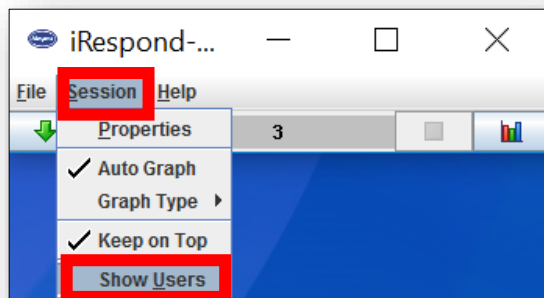
- Connect and turn on the base unit. Wait to see that the chain is connected. When the chain connects, click **Next**.



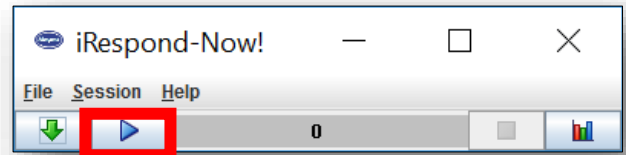
- The iRespondNOW toolbar will appear on your screen.



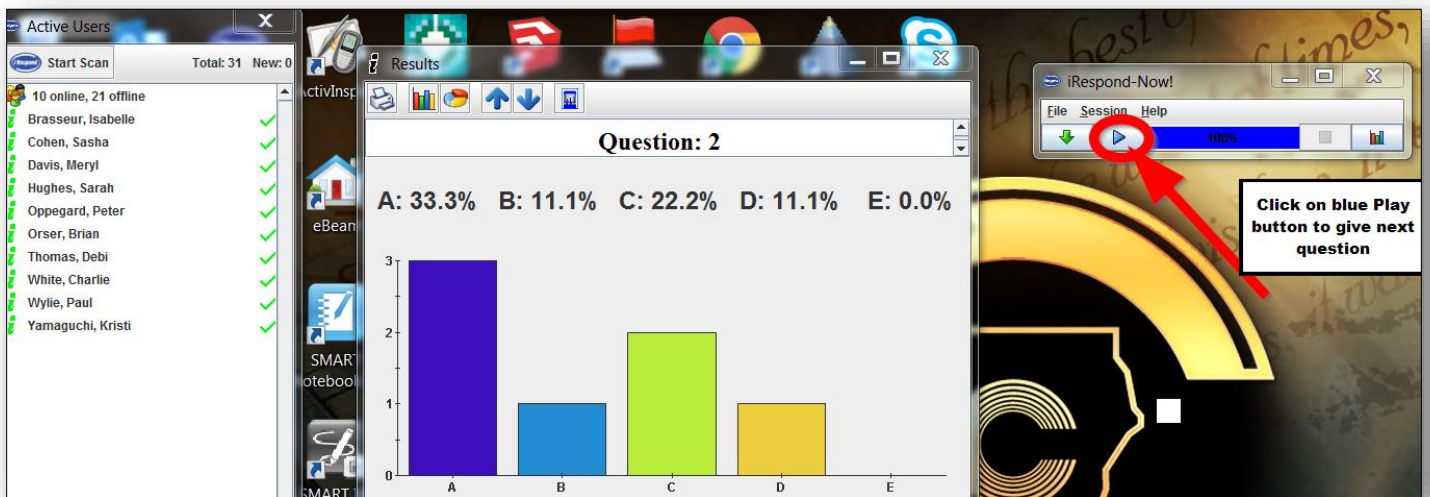
- Have students turn on their remotes, enter their **PIN** (student ID), and press **Send**. They will see "login sent" and then "login accepted." Student remotes will remain on the "login accepted" screen until the instructor sends a question.
- The iRespond NOW toolbar will indicate how many students are logged on. The instructor may check and display student login progress. Click **Session** for the drop down menu, and select **Show Users**. User list may be displayed or minimized.



9. To send a poll question, click on the **blue play button**. Then either ask or display the question with up to five choices listed as A, B, C, D, or E. Students will choose their answer. They are not allowed to change it.



10. When 100% of the students have answered, a results graph will automatically appear on your screen. To give another question, click on the blue play button as shown below and repeat steps 9 & 10 until completed.

A screenshot of the iRespond-Now! application interface. On the left, there is an "Active Users" window showing a list of 10 online users with green checkmarks next to their names. In the center, a "Results" window displays "Question: 2" and a bar chart showing the distribution of answers: A: 33.3%, B: 11.1%, C: 22.2%, D: 11.1%, and E: 0.0%. On the right, the iRespond-Now! application window is visible, showing a progress bar at 100% and a blue play button highlighted with a red circle and a red arrow. A callout box with a black border and white text says "Click on blue Play button to give next question".

Choice	Percentage
A	33.3%
B	11.1%
C	22.2%
D	11.1%
E	0.0%