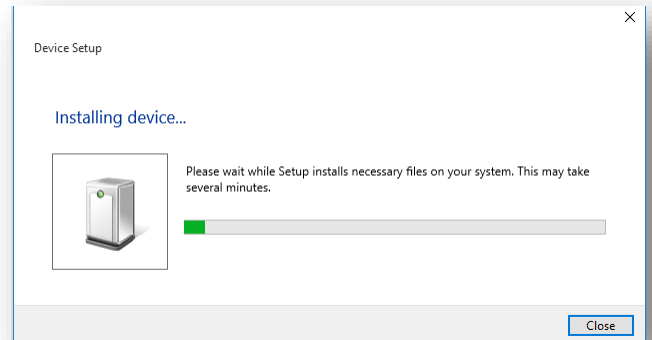


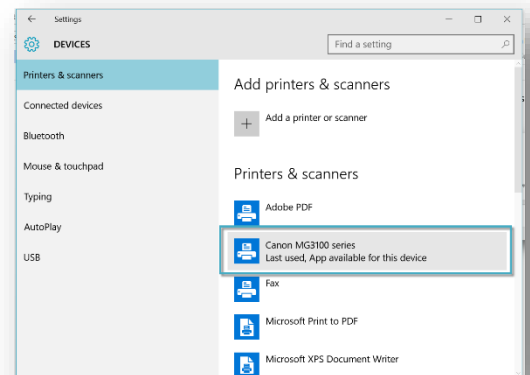
Installing a Home Printer on Windows 10 Laptop

This documentation covers the installation of a home printer to a Windows 10 PC.

1. Connect your home printer to the USB port on the laptop.
2. Windows 10 should have the printer drivers already installed. Installation, in many cases, is automatic without any notification.
3. In some cases, you may see the Device Setup screen. Allow the system to finish installation.



4. To confirm installation, Click the Start button, then Settings.
5. Find your printer listed in the Printers and Scanners section of the Printers and Scanners window.



6. The printer is ready for use connected via USB.
7. For enabling the wireless functionality of your home printer, please consult your individual printer manufacturer documentation.